



## **KORLOY Inc.**

### **HEAD QUARTER**

Holystar B/D 953-1, Doksanbon – Dong, Geumcheon-Gu, Seoul, 153-823, Korea  
Tel: +82 – 2 – 522 – 3181 Fax: +82 – 2 – 522 – 3184, +82 – 2 – 3474 – 4744  
**Web : [www.korloy.com](http://www.korloy.com)** E-mail : [export@korloy.com](mailto:export@korloy.com)

### **JINCHEON FACTORY**

767-1, Gwanghyewon-Ri, Gwanghyewon-Myon, Jincheon-Gun, Chungcheongbuk-Do, 365-831, Korea  
Tel: +82 – 43 – 535 – 0141 Fax: +82 – 43 – 535 – 0144

### **CHEONGJU FACTORY**

53-16, Songjeong – Dong, Hungduk – Gu, Cheongju, Chungcheongbuk – Do, 361 – 290, Korea  
Tel: +82 – 43 – 262 – 0141 Fax: +82 – 43 – 262 – 0146

### **R&D INSTITUTE**

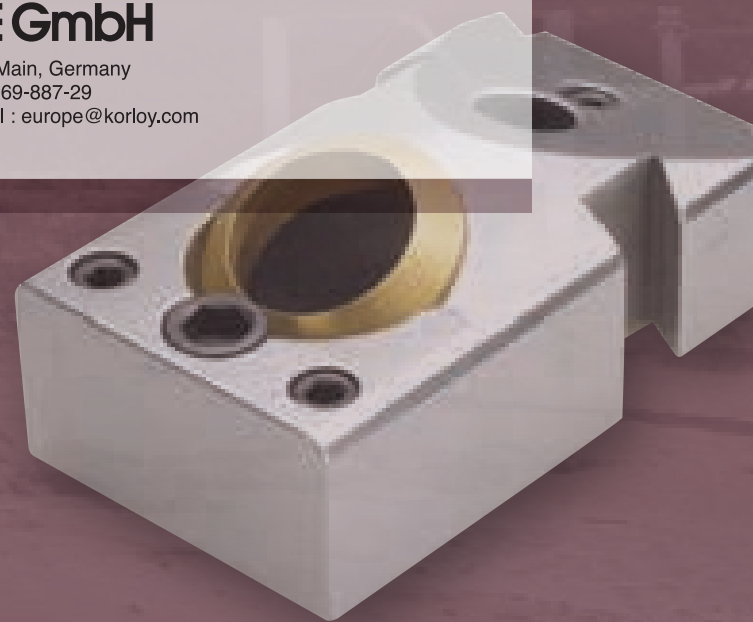
53-16, Songjeong – Dong, Hungduk – Gu, Cheongju, Chungcheongbuk – Do, 361 – 290, Korea  
Tel: +82 – 43 – 262 – 0141 Fax: +82 – 43 – 262 – 0711

## **KORLOY AMERICA Inc.**

2750 Oregon Court, South Bay Business Park, Suite M7, Torrance CA 90503, USA  
Tel : +1-310-782-3800 Toll Free : +1-888-711-0001 Fax : +1-310-782-3885  
**Web : [www.korloyamerica.com](http://www.korloyamerica.com)** E-mail : [korloyamerica@korloy.com](mailto:korloyamerica@korloy.com)

## **KORLOY EUROPE GmbH**

Heinrich-Lanz-Allee 12, 60437 Frankfurt am Main, Germany  
Tel : +49-69-5069-887-0 Fax : +49-69-5069-887-29  
**Web : [www.korloyeurope.com](http://www.korloyeurope.com)** E-mail : [europe@korloy.com](mailto:europe@korloy.com)



## Industrial Solutions of KORLOY



## PIPE INDUSTRY

We Create your Tomorrow!



We learn the challenge with nature.  
We also dream love in nature.  
'Challenge for dream, Love for human'  
It's an ideal of Korloy like nature.



## The 21st century of KORLOY is the power for a better future.

KORLOY Inc. is a total cutting tool manufacturer specializing in uncoated, coated (CVD, PVD), and Cermet inserts.

KORLOY Inc. was founded in 1966.

Our establishment is now a top leading cutting tool provider that constantly invests and improves our R&D center in Korea

Our goal is to be the top, globally leading company that overcomes the continuous challenges and innovations.

KORLOY Inc. products manufactured by the ever growing R&D department along with our innovative production technology are selling and exporting to over 80 countries, as the global company recognized with higher technology.

KORLOY Inc. continuously endeavors to grow as the global enterprise representing Korea.

We sincerely anticipate your on-going interest for KORLOY Inc.




## PIPE INDUSTRY

The Pipe is classified into two major types according to the material: metallic and nonmetallic. It is used in various industries for the purpose of carrying granular material and fluid (gas, liquid).

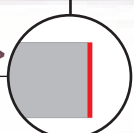
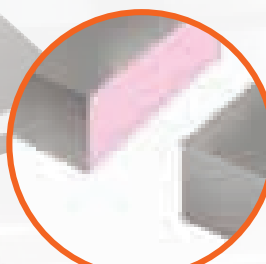
The steel pipe needs specialized technology and know-how to process its' manufacturing which includes the bending, edge trimming, and welding. Korloy ensures high quality products and services with the technology oriented precision cutting tools and know-how.

The industrial solutions of Korloy will provide satisfaction for our customers' various needs.

# Edge Milling



**1** **SKELP**  
**<I-type Edge Miller(Φ 850mm)>**  
[ Skelp I-type Face Machining ]  
: NCM325, PC5300  
LNMNtype  
SNENtype (64teeth)



**3** **SKELP**  
**<Special-type Edge Miller>**  
[ Special Edge Machining ]  
: NCM325, PC5300  
SNKNtype



**2** **SKELP**  
**<X-type Edge Miller (Φ 500mm)>**  
[ Skelp X-type Face Machining ]  
: NCM325, PC5300  
SNGNtype (30teeth)



**4** **SKELP**  
**<Y-type Edge Miller (Φ 350mm)>**  
[ Skelp Y-type Face Machining ]  
: NCM325, PC5300  
SNKNtype (32teeth)



# Bead Trimming

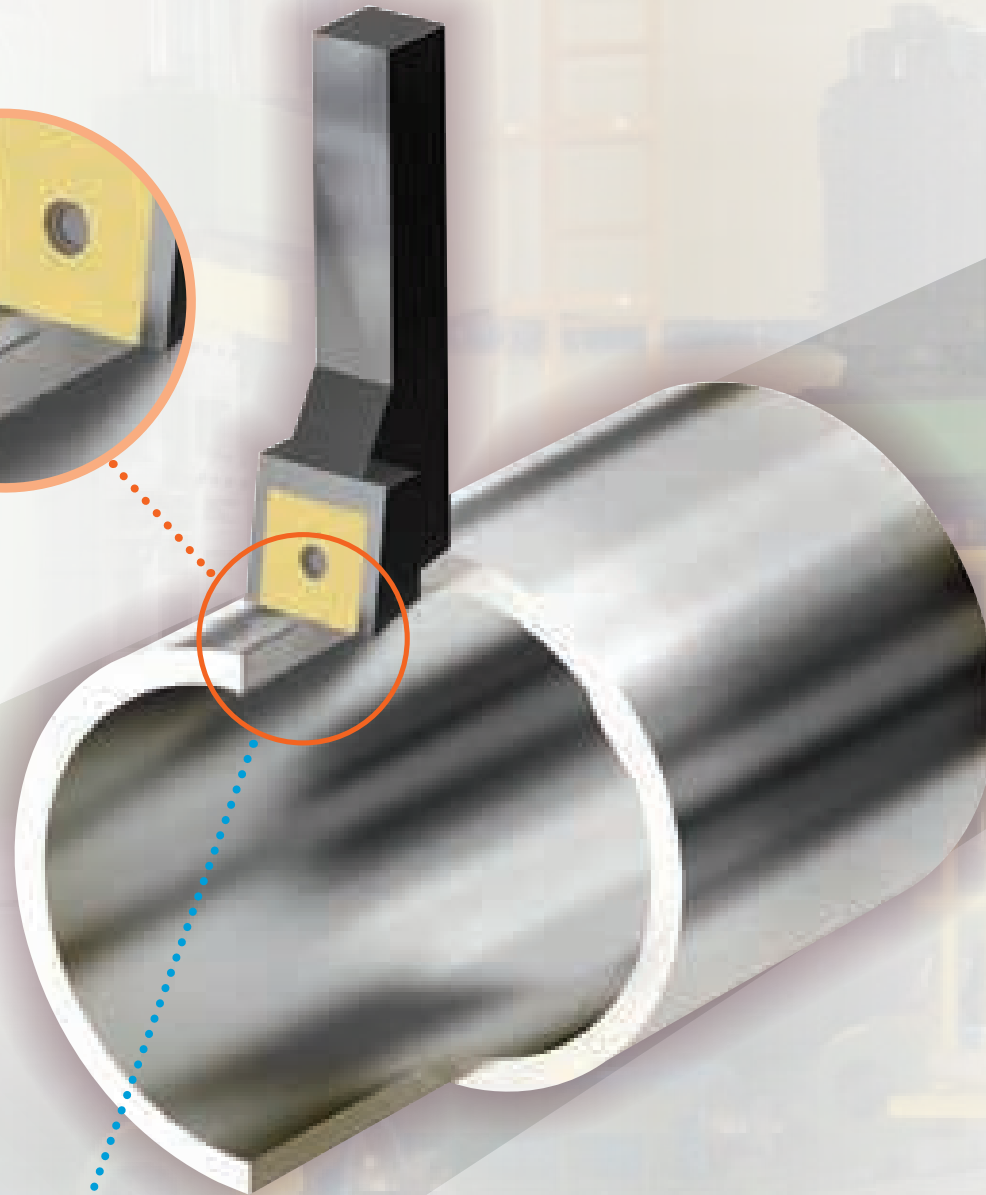
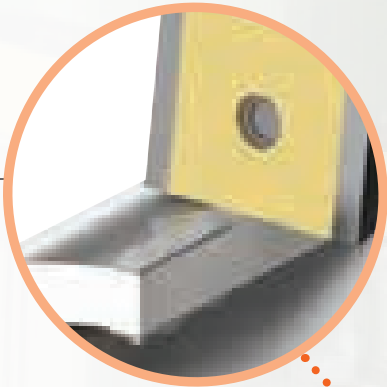
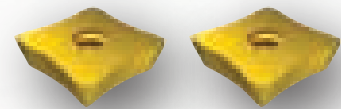
1

## Outer Bead Removal Process

[ Outer Welding Bead Removal ]

: NC3030

SDMX type, SEGW type  
SNMG type, SNMN type  
SEOT type, SEGX type



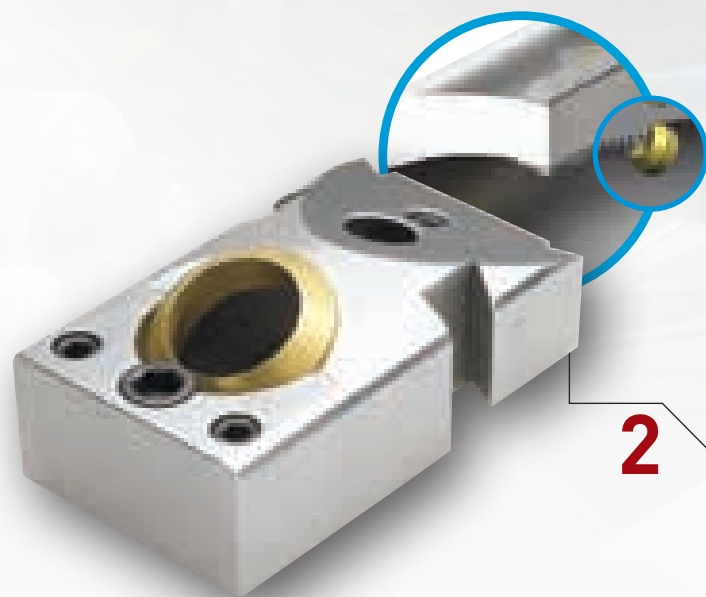
2

## Inner Bead Removal Process

[ Inner Welding Bead Removal ]

: CX1222

AR type  
SF type

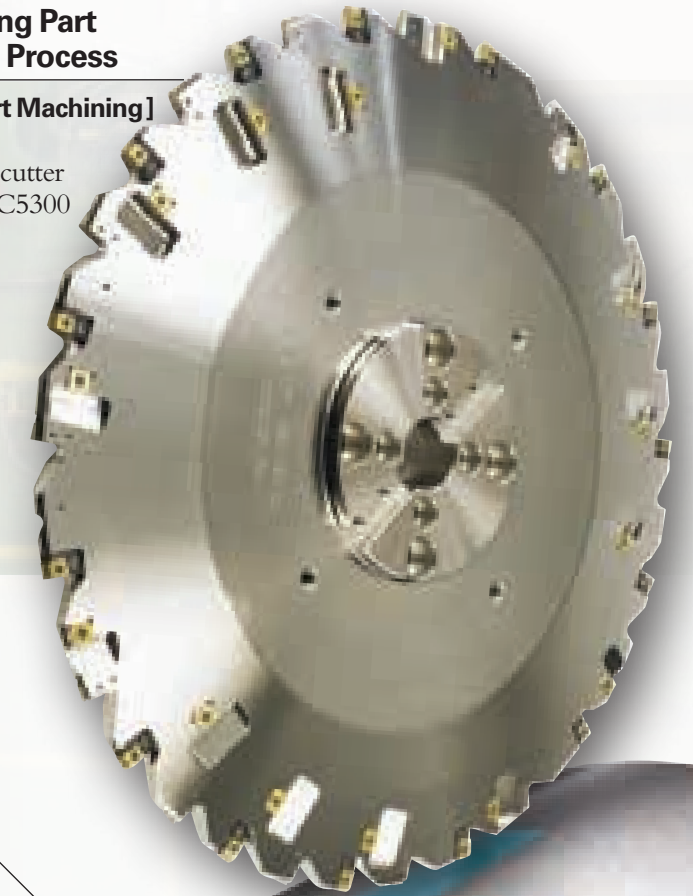


3

## Pipe Welding Part Machining Process

[ Welding Part Machining ]

: Special long  
shim milling cutter  
: NCM325, PC5300

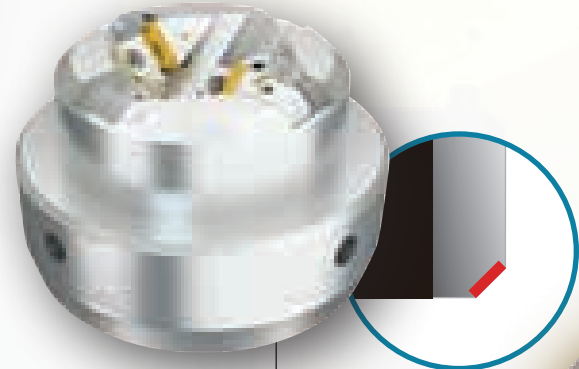


# Pipe End Machining

End Facing

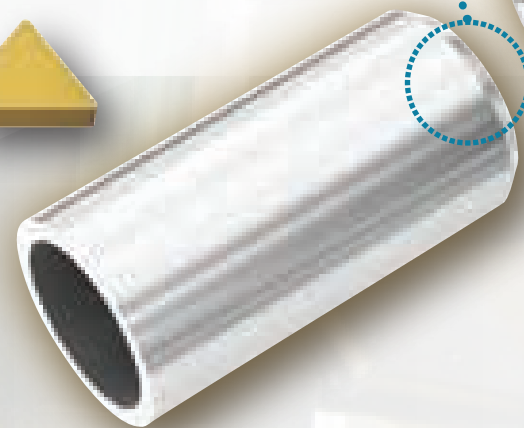
# Pipe Cutting-off Machining

Cutting



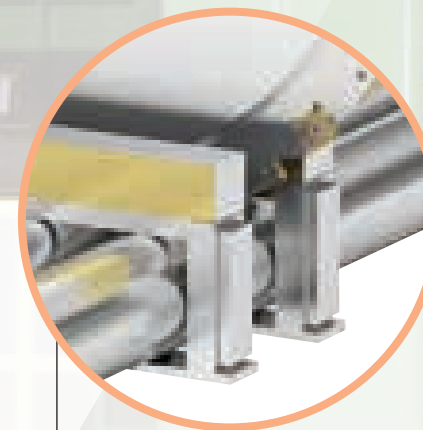
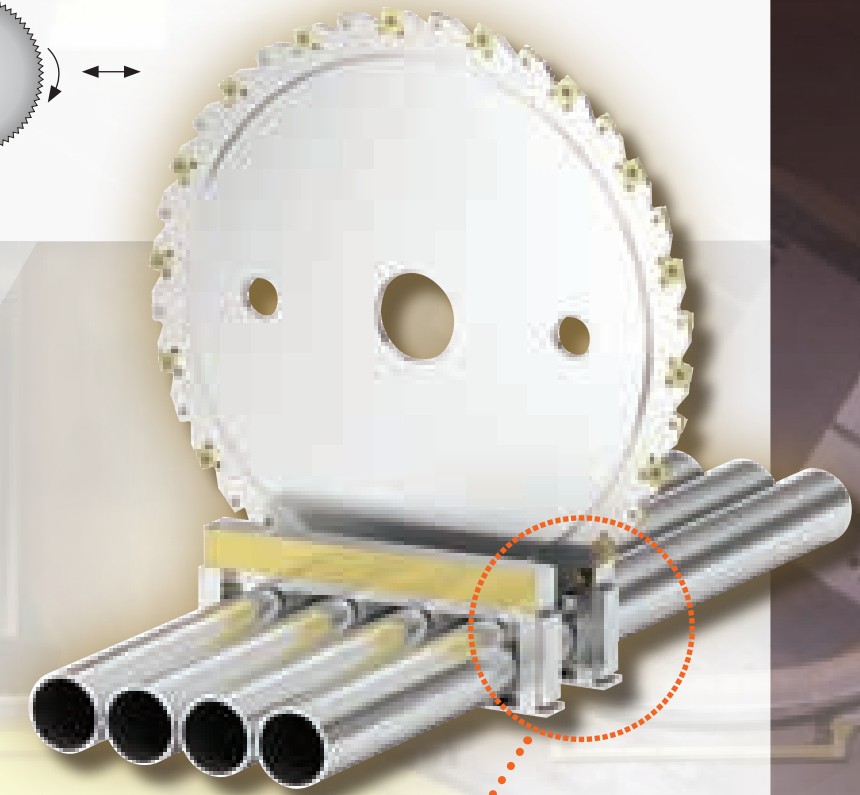
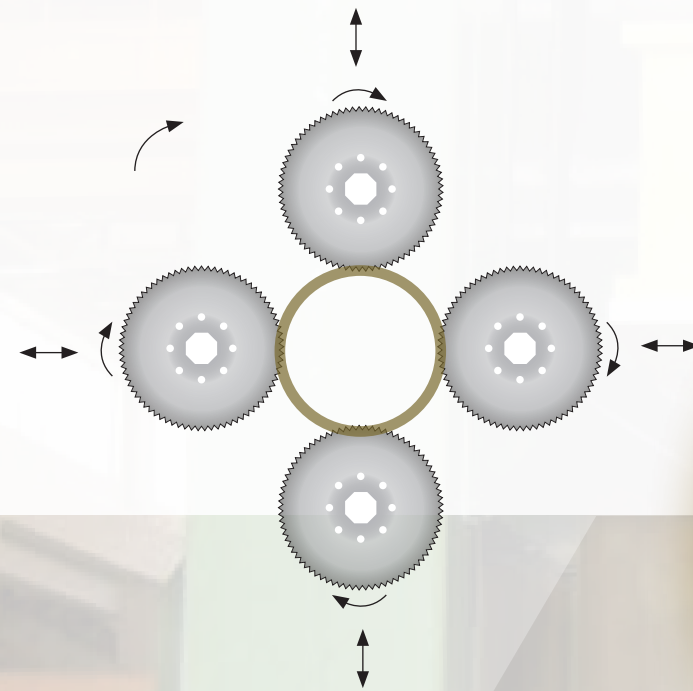
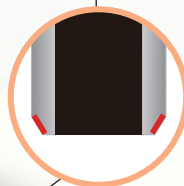
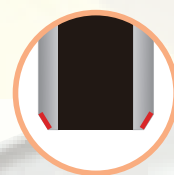
## 1 Pipe End Chamfer

[ Pipe End Machining Step 1 ]  
: Special cutter for chamfering  
: NCM325, PC3500  
: TNMN type insert



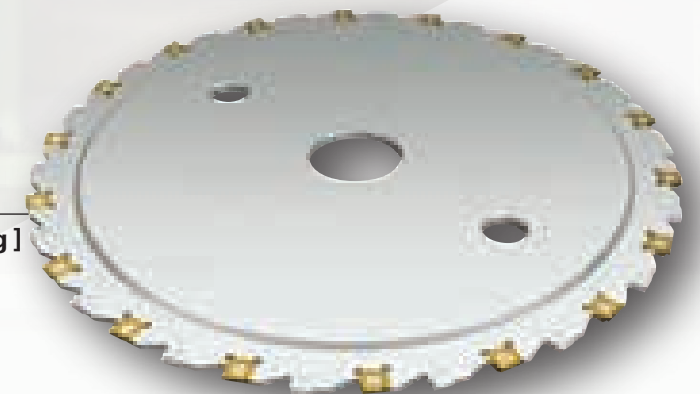
## 2 Pipe End Chamfer

[ Pipe End Machining Step 2 ]  
: Special cutter for chamfering  
: NCM325, PC3500  
: SNMG type insert



## 1 Pipe Cutting-Off

[ Pipe Cutting-Off Machining ]  
: Special cutter for slitting  
: NCM325, PC3500  
: SNEX type insert

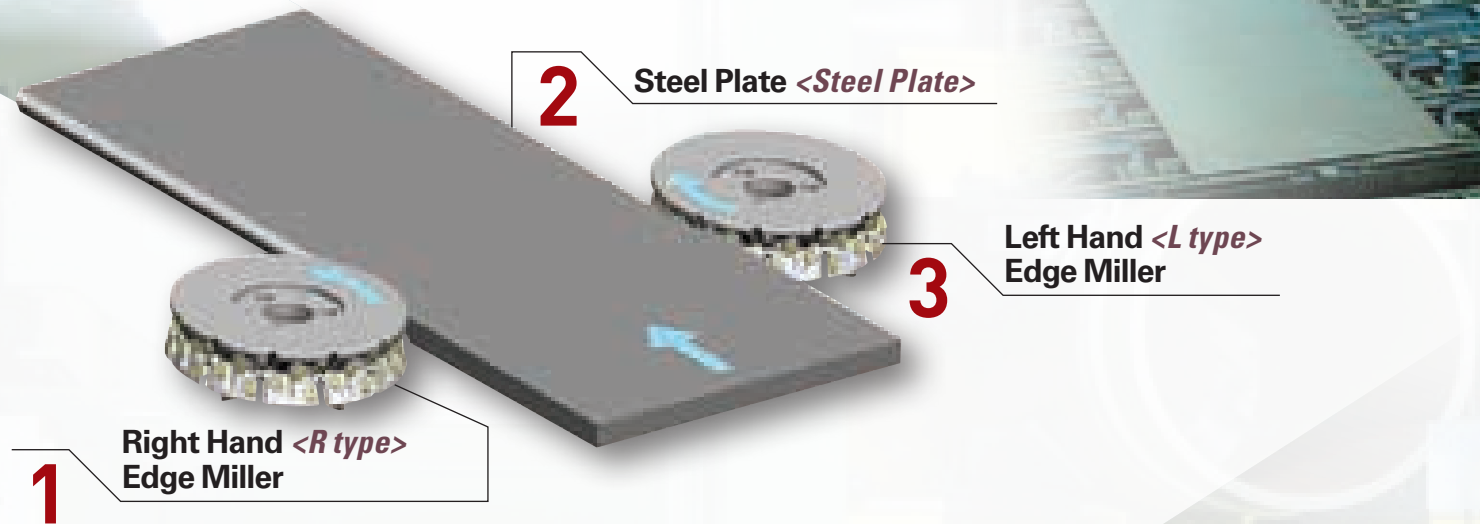


# Manufacturing Process

Pipe industry

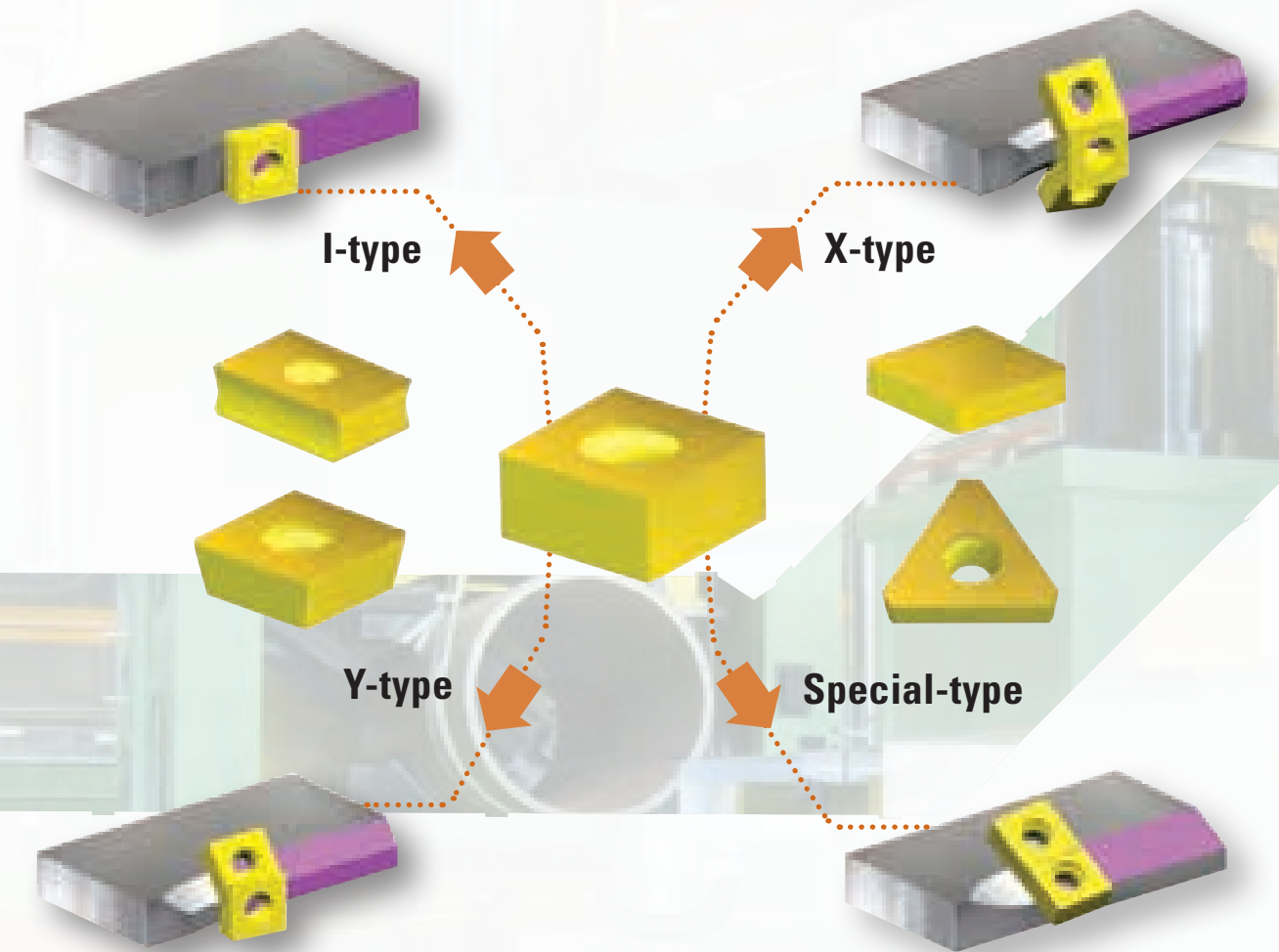
## Roll Bending Type

### Steel Plate Edge Milling



## Spiral Type

### Hot Coil Skelp Edge Milling



## Edge Miller insert

Coating	Grade	ISO	Workpiece material		
			P(Steel)	M(Stainless steel)	K(Cast Iron)
CVD	NCM325	P20~P30 M20~M30	●	●	
	NCM335	P30~P40 M30~M40	●	●	
PVD	PC3500	P10 ~ P30	●		
	PC5300	P30, M30, K30	●	●	●
	PC6510	K01~K15			●

\* Contact us for more information.(Recommended cutting condition & horse power etc.)